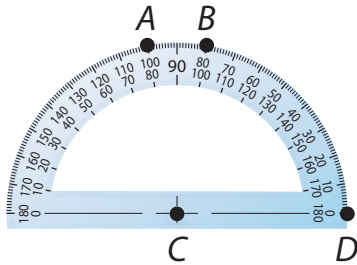


# Practice Measuring and Drawing Angles

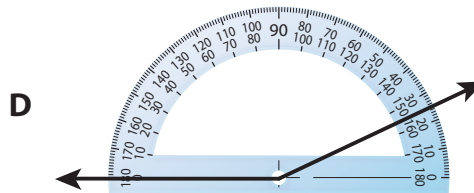
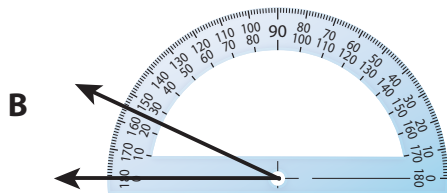
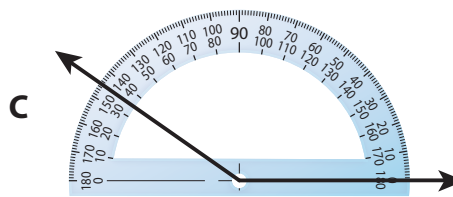
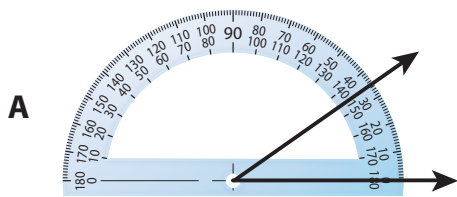
Solve the problems.

- 1 Which point could be the vertex of an  $80^\circ$  angle that you could measure without moving the protractor?

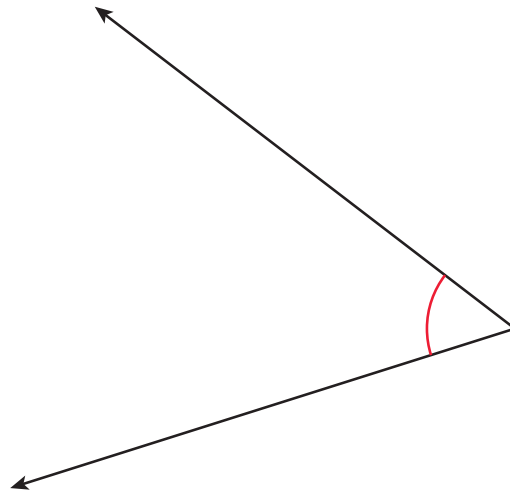


- A point A
- B point B
- C point C
- D point D

- 2 Which diagram shows a  $25^\circ$  angle?

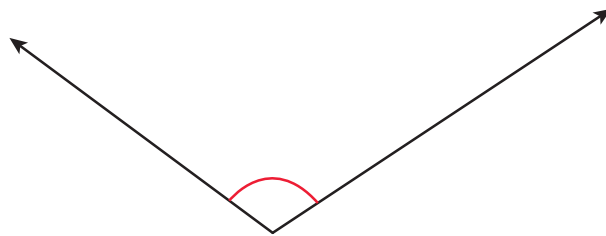


3 What is the measure of this angle?



Answer \_\_\_\_\_°

4 What is the measure of this angle?



Answer \_\_\_\_\_°

5 Ana placed a protractor over a ray so her protractor's center point is on the endpoint of the ray, and a second point on the ray is at  $90^\circ$ . What can she do next to make a  $30^\circ$  angle?

Answer \_\_\_\_\_  
\_\_\_\_\_  
\_\_\_\_\_  
\_\_\_\_\_

**✓ Self Check** Go back and see what you can check off on the Self Check on page 239.